

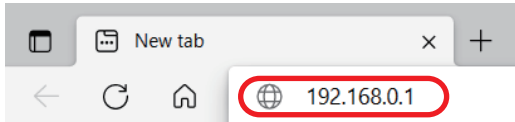
# Firmware Update Procedure

This document describes how to upgrade the firmware of WM-100.

The firmware can be updated using the Web browser interface of WM-100.

\* In this document, Windows 10 is used as an example. However, the procedure will be the same if you are using an OS other than Windows 10.

1. Start a Web browser on the PC and enter the IP address of WM-100 in the address bar. Press the Enter key.



\* Above IP address is a sample address.  
Enter the IP address configured to WM-100.

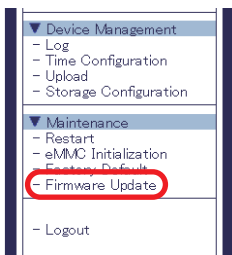
\* Display may vary depending on the Web browser.

2. The login page of WM-100 is displayed.  
Enter the password of WM-100 and click **Login**.



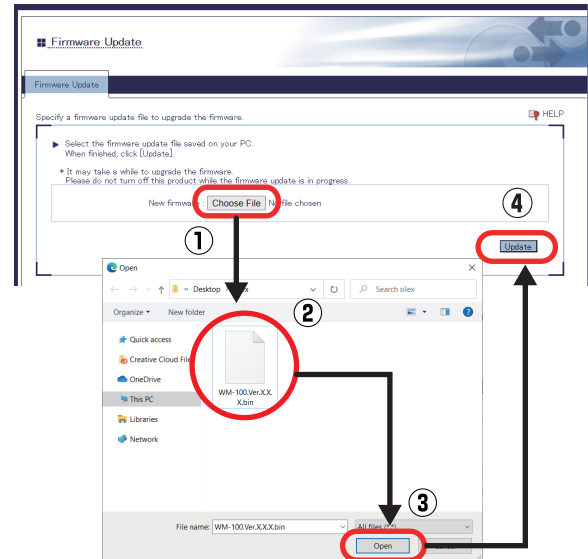
\* When the login password configuration page appears, enter the password to configure for WM-100. After the login password is configured, enter it at the login page.

3. The Web page appears. Click **Firmware Update** from the menu.

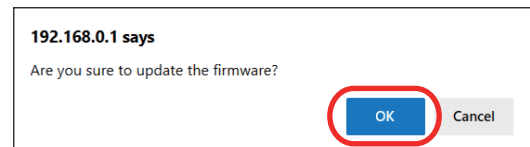


4. The **Firmware Update** page appears. Click the button to the right of **New firmware**, and select the latest firmware (WM-100.Ver.X.X.X.bin) that has been downloaded to the PC, and click **Update**.

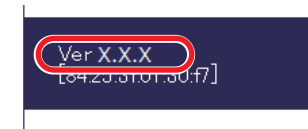
\* "X.X.X" included in the file name (WM-100.Ver.X.X.X.bin) is a firmware version.



5. The update confirmation dialog appears. Click **OK** to update the firmware. Please wait until the update is complete.



6. When the login page appears, check the latest version is displayed in the bottom left corner.



7. Now, the firmware has been updated. Close the Web browser and restart WM-100 by unplugging and plugging the power code.

If you have any issues, please contact our Customer Support Center.

US

Email: support@silexamerica.com

Europe

Email: support@silexeurope.com