

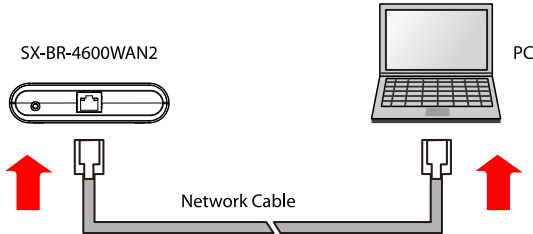
Firmware Update Procedure

This document describes how to upgrade the firmware of SX-BR-4600WAN2.

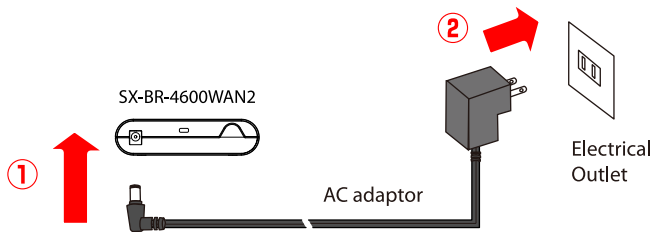
The firmware can be updated using the Web browser interface of SX-BR-4600WAN2.

- * In this document, Windows 10 is used as an example. However, the procedure will be the same if you are using an OS other than Windows 10.
- * Display may vary depending on the Web browser.

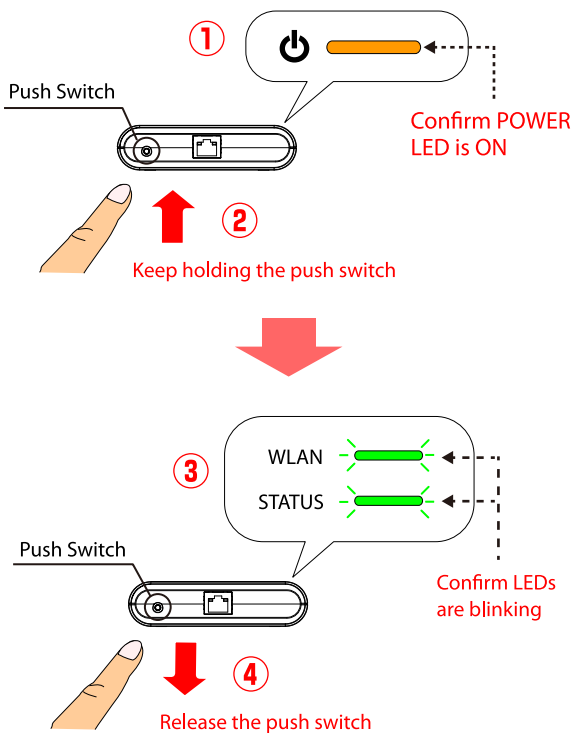
- 1** Connect SX-BR-4600WAN2 to the PC using the network cable that came with SX-BR-4600WAN2.



- 2** Connect the AC adaptor to SX-BR-4600WAN2, and the AC adaptor's plug to an electrical outlet.

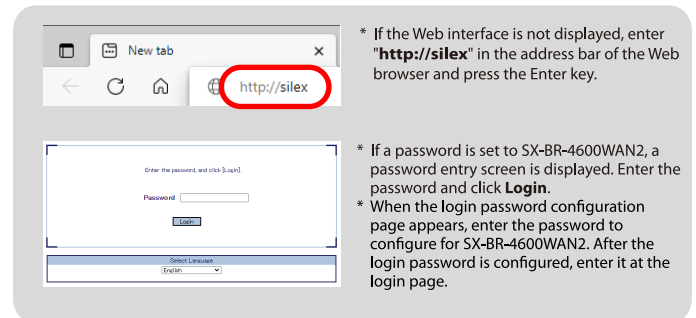
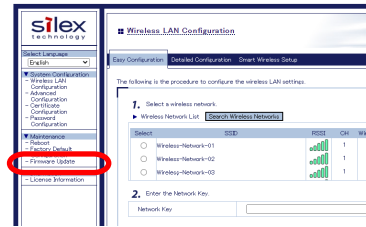


- 3** When the POWER LED (at the top) turns ON, press and hold the push switch (at the front). Release the push switch when WLAN LED and STATUS LED start to blink together (It may take 20sec until blinking). SX-BR-4600WAN2 will start running in the **Configuration Mode** then. Now you can configure SX-BR-4600WAN2 from the PC that has been connected to SX-BR-4600WAN2 via a network cable.

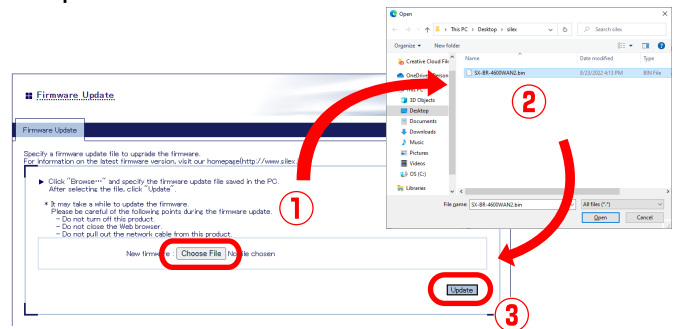


* If wireless LAN is enabled on your PC, please disable it.

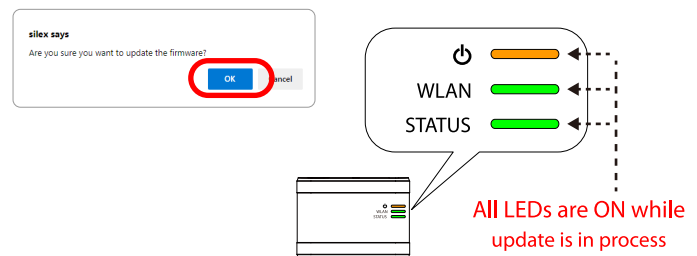
- 4** Start your Web browser (e.g. Microsoft Edge, Safari, etc.) from the PC and then the Web interface of SX-BR-4600WAN2 will be displayed. Click **Firmware Update**.



- 5** The Firmware Update page appears. Click the button to the right of **New firmware**, and select the firmware file (**SX-BR-4600WAN2.bin**) that has been downloaded to the PC, and click **Update**.



- 6** Click **OK** to the confirmation message. The firmware update will begin. All LEDs on top of SX-BR-4600WAN2 turn ON while the firmware update is in process.



* Do not turn off SX-BR-4600WAN2 or close your Web browser while the firmware update is in process.

- 7** When the LED status changed from above, turn off SX-BR-4600WAN2 by unplugging AC adaptor from the electrical outlet. The firmware update has been completed now.