

# DS-600 Firmware Update Procedure

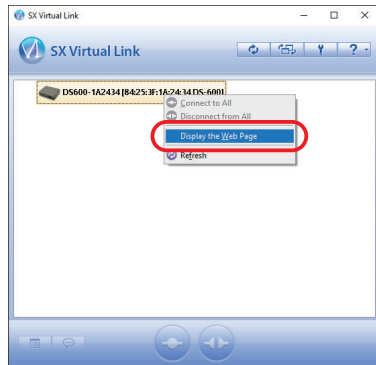
This document describes how to update the firmware of DS-600.

The firmware can be upgraded using the Web browser interface of DS-600 which can be accessed using the SX Virtual Link utility. Before you start, please make sure that both your PC and DS-600 are connected to a wired network.

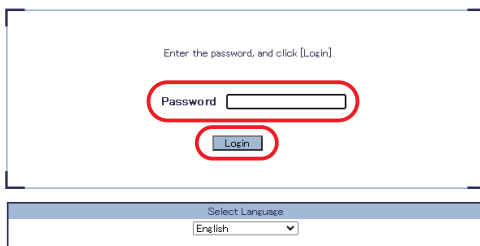
\* This document uses the screenshots captured from Windows 10. However, the procedure will be the same if you are using an OS other than Windows 10.

\* Display may vary depending on the Web browser.

1. Start the SX Virtual Link utility.  
Right-click the device server on SX Virtual Link's main window and select **Display the Web page** from the menu displayed.

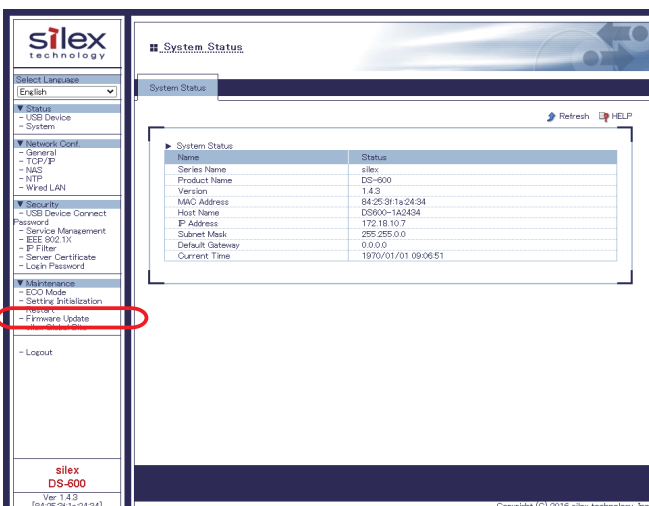


2. The login page is displayed.  
Enter the password for DS-600 and click **Login**.

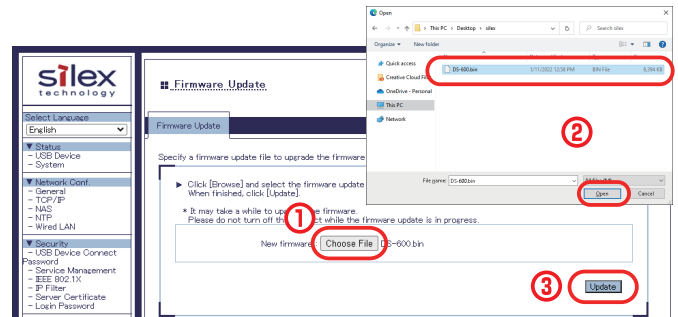


\* When the password configuration page is displayed, configure the password.

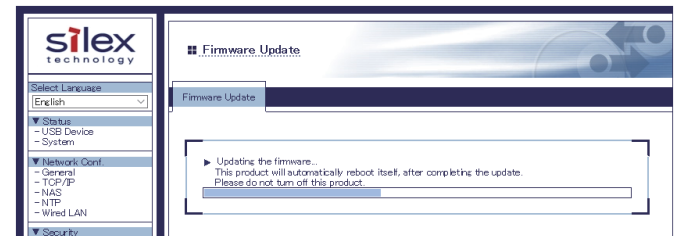
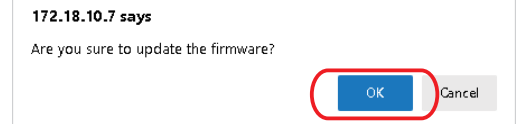
3. After the login, the configuration page is displayed.  
Click **Firmware Update** under **Maintenance**.



4. The **Firmware Update** page appears. Click the button to the right of **New firmware**, and select the firmware file (DS-600.bin) that has been downloaded to the PC, and click **Update**.



5. The update confirmation message is displayed.  
Click **OK** to begin the firmware upgrade.



\* Do not turn off DS-600 or close your Web browser while the firmware upgrade is in process.

6. When the login page is displayed, the firmware update is completed.  
See the bottom left of the page and check the version information is changed.

If you have any issues, please contact our Customer Support Center.

US  
Email: support@silexamerica.com

Europe  
Email: support@silexeurope.com