

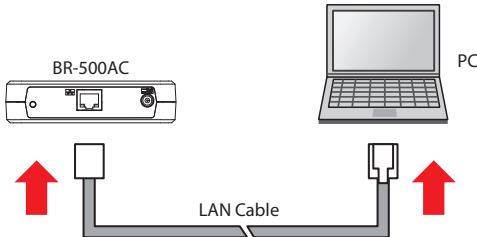
# Firmware Update Procedure

This document describes how to upgrade the firmware of BR-500AC.

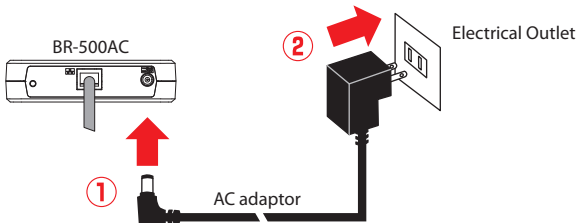
The firmware can be updated using the Web browser interface of BR-500AC.

\* In this document, Windows 10 is used as an example. However, the procedure will be the same if you are using an OS other than Windows 10.

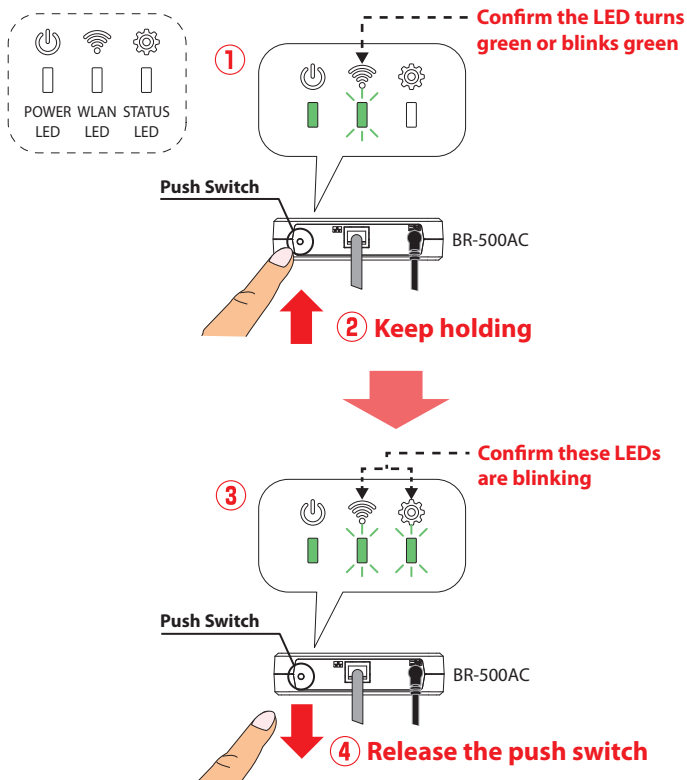
- 1** Connect BR-500AC to the PC using the LAN cable that came with BR-500AC.



- 2** Connect the AC adaptor to BR-500AC, and the AC adaptor's plug to an electrical outlet.

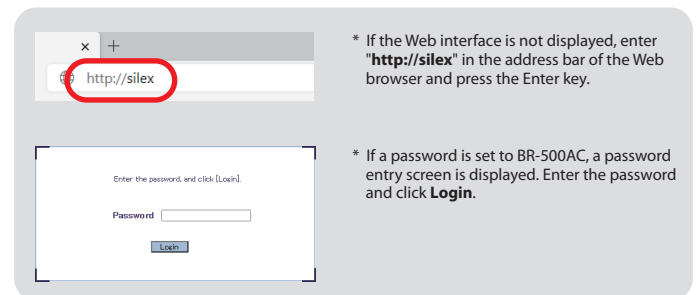
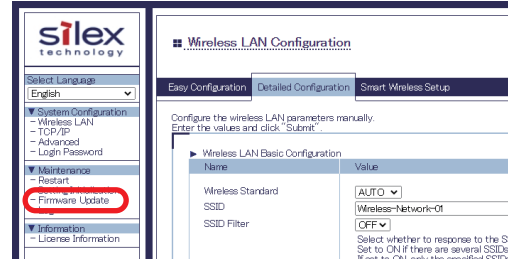


- 3** When the POWER LED (at the top) turns green and the WLAN LED turns on or blinks, press and hold the push switch (at the front). In 5 seconds, the WLAN LED and STATUS LED will start to blink green together. Release the push switch then. BR-500AC will start running in the **Configuration Mode**. Now you can upgrade the firmware of BR-500AC from the PC that has been connected to BR-500AC via a LAN cable.



\* If wireless LAN is enabled on your PC, please disable it.

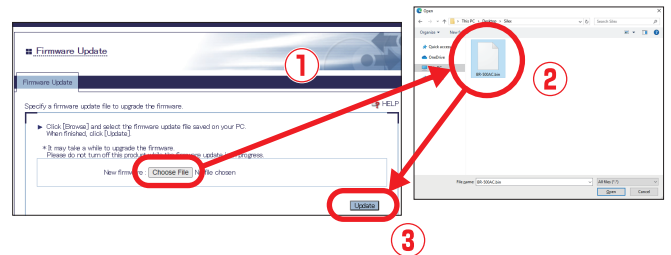
- 4** Start your Web browser (Microsoft Edge, Safari) from the PC and then the Web interface of BR-500AC will be displayed. Click **Firmware Update**.



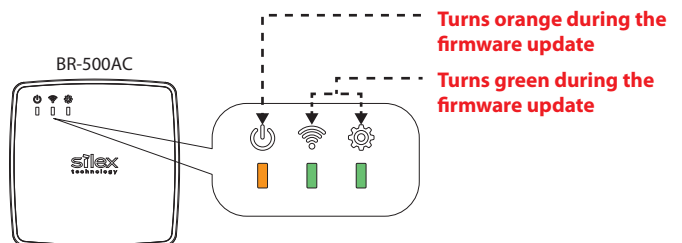
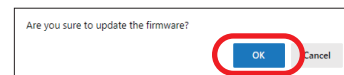
\* If the Web interface is not displayed, enter **"http://silex"** in the address bar of the Web browser and press the Enter key.

\* If a password is set to BR-500AC, a password entry screen is displayed. Enter the password and click **Login**.

- 5** Firmware Update page is displayed. Click the button to the right of **New firmware**, and select the firmware update file (**BR-500AC.bin**). Check that the file name is displayed at **New firmware**, and click **Update**.



- 6** Click **OK** to the confirmation message. The firmware update will begin. The POWER LED turns orange, and the WLAN LED and STATUS LED turn green while the firmware update is in process.



\* Do not turn off BR-500AC or close your Web browser while the firmware update is in process.

- 7** When the LED light pattern is changed, the firmware update is complete. Turn off BR-500AC by unplugging AC adaptor from the electrical outlet. The firmware update has been completed now.

If you have any issues, please contact our Customer Support Center.