

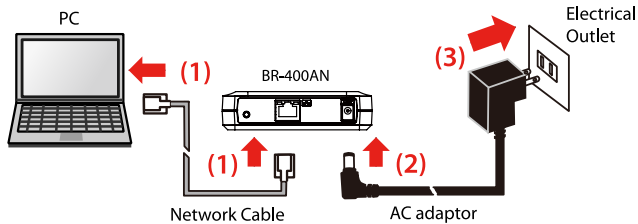
# Firmware Update Procedure

This document describes how to upgrade the firmware of BR-400AN.

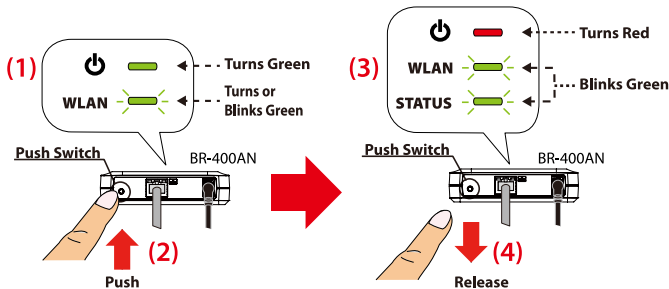
The firmware can be updated using the Web browser interface of BR-400AN.

- \* In this document, Windows 10 is used as an example. However, the procedure will be the same if you are using an OS other than Windows 10.
- \* Display may vary depending on the Web browser.

- 1 Connect BR-400AN and the PC using a network cable (1) and turn on BR-400AN (2)(3). If you know the IP address of BR-400AN, enter the IP address to the address bar of the Web browser and press the Enter key. Go on to 4 then.  
If you are not sure of the IP address of BR-400AN, go on to 2.

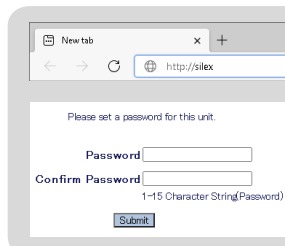
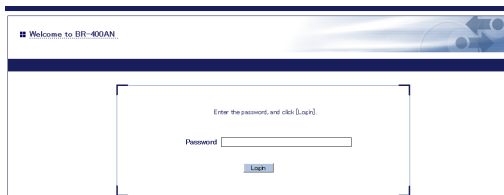


- 2 On top surface of BR-400AN, check that the POWER LED turns green and the WLAN LED turns or blinks green/orange (1). Push and hold the push switch on the front surface (2). When the POWER LED turns red and the WLAN LED and the STATUS LED start to blink green together (3), release the push switch (4) (it may take 20 sec until both LEDs start to blink). BR-400AN will start to run in a configuration mode and configuration will become available on the PC that has been connected to BR-400AN using the network cable.



- When BR-400AN is started, only the POWER LED turns green for 2 sec and then turns off. If the push switch is pushed then, BR-400AN is not started in the configuration mode.
- Before you push the push switch, check that the POWER LED turns green and the WLAN LED turns or blinks green/orange.

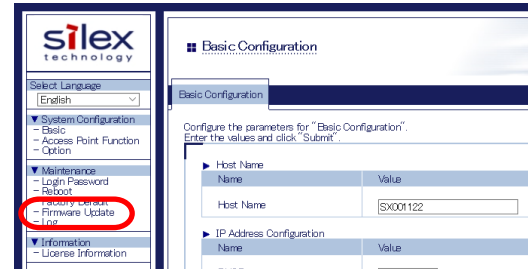
- 3 Start a Web browser (Edge, Internet Explorer, Google Chrome, etc.) on the PC. The Web page of BR-400AN is displayed.



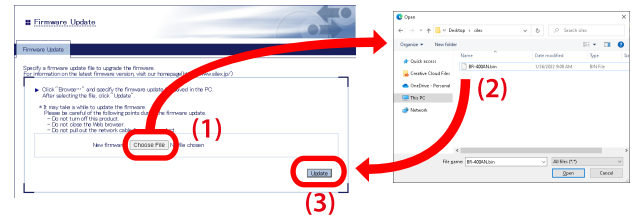
- \* If the Web page is not displayed, enter "http://silex" in the address bar of the Web browser and press the Enter key.
- \* When the login password configuration page appears, enter the password to configure for BR-400AN. After the login password is configured, enter it at the login page.

- 4 Enter the password of BR-400AN and click **Login**.

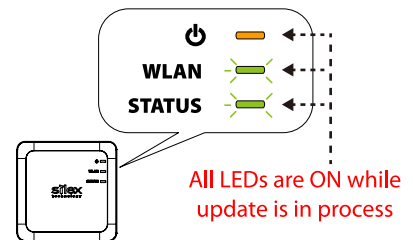
- 5 Click **Firmware Update** from the menu.



- 6 The **Firmware Update** page appears. Click the button to the right of **New firmware**, and select the firmware file (**BR-400AN.bin**) that has been downloaded to the PC, and click **Update**.



- 7 Click **OK** to the confirmation message. The firmware update will begin. All LEDs on top of BR-300AN turn ON while the firmware update is in process.



- \* Do not turn off BR-400AN or close your Web browser while the firmware update is in process.

- 8 When the LED status changed from above, turn off BR-400AN by unplugging AC adaptor from the electrical outlet. The firmware update has been completed now.