

# Serial Device Server SD-300 Setup Guide



WA106040XA

Thank you for purchasing the Serial Device Server, SD-300. This Setup Guide provides information on how to set up and use SD-300.

## Package Contents

The following items are included in SD-300 package.

- SD-300
- AC adaptor
- Setup Guide (this document)
- GPL license notice
- Warranty Booklet
- Rubber foot (4pcs)

## Setup Procedure

The following is the procedure to setup SD-300.

### Step1 Before You Begin

Prepare the items and information that will be necessary to setup SD-300.

### Step2 Setup

Install SD-300 to your network and configure the network settings.

### Step3 Link to Serial Device

Link to your serial device.

## Step1 Before You Begin

### 1-1. Necessary Items

The following items are required in order to use SD-300.

Network Cable	Serial Cable																						
<p>Connect SD-300 to a wired LAN.</p> <p>* In a 100BASE-TX network, a network cable supporting 100BASE-TX (category 5 or above) is required.</p>	<p>Connect SD-300 and your serial device.</p> <p>The serial port PIN assignment is shown on the right.</p> <p>Use the serial cable that came with your serial device (the one you may have been using to connect the PC and serial device directly) or that is recommended in the operating manual of your serial device.</p> <table border="1"> <thead> <tr> <th colspan="2">PIN Assignment</th> </tr> <tr> <th>Pin</th> <th>Details</th> </tr> </thead> <tbody> <tr><td>1</td><td>DCD(Data Carrier Direct) Input</td></tr> <tr><td>2</td><td>RxD(Receive Data) Input</td></tr> <tr><td>3</td><td>TxD(Transmit Data) Output</td></tr> <tr><td>4</td><td>DTR(Data Terminal Ready) Output</td></tr> <tr><td>5</td><td>GND(Ground) Input</td></tr> <tr><td>6</td><td>DSR(Data Set Ready) Input</td></tr> <tr><td>7</td><td>RTS(Request To Send) Output</td></tr> <tr><td>8</td><td>CTS(Clear To Send) Input</td></tr> <tr><td>9</td><td>RI(Ring Indicate) Input or +5VDC Power Input</td></tr> </tbody> </table>	PIN Assignment		Pin	Details	1	DCD(Data Carrier Direct) Input	2	RxD(Receive Data) Input	3	TxD(Transmit Data) Output	4	DTR(Data Terminal Ready) Output	5	GND(Ground) Input	6	DSR(Data Set Ready) Input	7	RTS(Request To Send) Output	8	CTS(Clear To Send) Input	9	RI(Ring Indicate) Input or +5VDC Power Input
PIN Assignment																							
Pin	Details																						
1	DCD(Data Carrier Direct) Input																						
2	RxD(Receive Data) Input																						
3	TxD(Transmit Data) Output																						
4	DTR(Data Terminal Ready) Output																						
5	GND(Ground) Input																						
6	DSR(Data Set Ready) Input																						
7	RTS(Request To Send) Output																						
8	CTS(Clear To Send) Input																						
9	RI(Ring Indicate) Input or +5VDC Power Input																						

## 1-2. Downloading the necessary items

This section explains how to download the necessary utilities and user's manual from our website.

**1** Access the URL below from the computer you are using to configure the SD-300.

URL : <https://www.silextechnology.com/>

**2** Go to the **Support** page and select the product model.

Product Model	SD-300
---------------	--------

**3** Download the utilities and user's manual below and extract them on your computer.

User's Manual	SD-300 User's Manual
---------------	----------------------

■ The below is used on the computer where you configure SD-300.

Utility	Serial Device Server Setup
---------	----------------------------

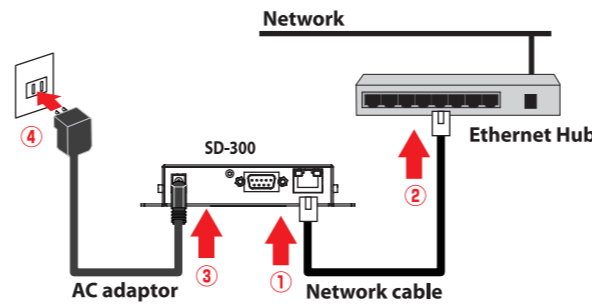
■ The below is used on the computer where you use SD-300.

Utility	SX Virtual Link for Serial Device Server
Installation Guide	SX Virtual Link for Serial Device Server Installation

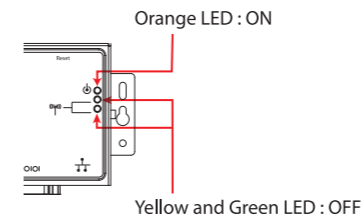
## Step2 Setup

### 2-1. Before Setup

**1** Connect a network cable to SD-300 and the other end to an Ethernet Hub. Connect an AC adaptor to SD-300 and power plug to an outlet.



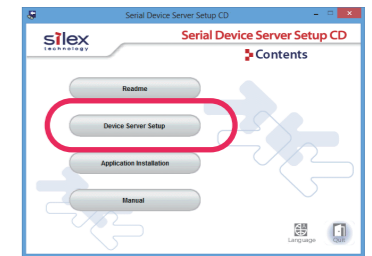
**2** Check the LEDs on SD-300.  
- Orange LED turns ON  
- Green/Yellow LEDs turn OFF



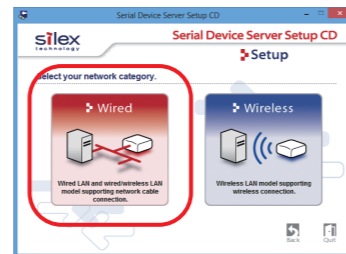
### 2-2. Configure Network Settings

**1** Open the folder "Serial Device Server Setup" you have downloaded and double-click **Sdsetup.exe**.

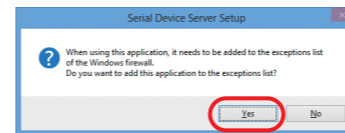
**2** Click **Device Server Setup**.



**3** Click **Wired**.



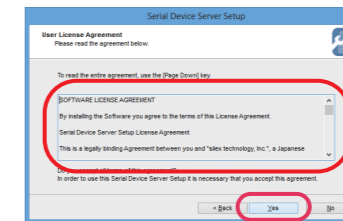
**4** Click **Yes**.



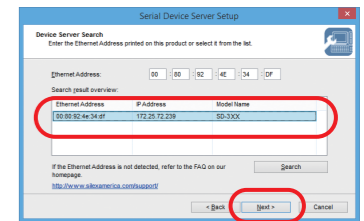
**5** The Serial Device Server Setup screen is displayed. Click **Next**.



**6** Read the SOFTWARE LICENSE AGREEMENT and click **Yes**.

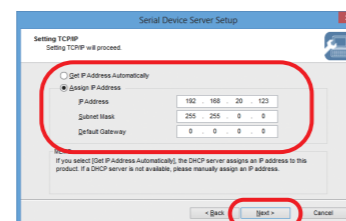


**7** Select SD-300 and click **Next**.



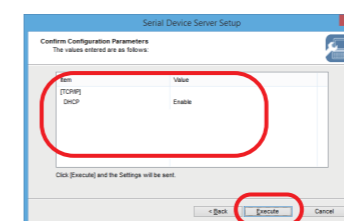
\* If the User Account Control screen is displayed, click **Yes** or **Continue**.

**8** Select **Assign IP Address** and enter the designated IP address and click **Next**.

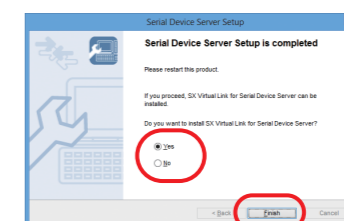


\* When there is a DHCP server on your network and you wish to obtain an IP address automatically from it, select **Get IP Address Automatically** and click **Next**.  
\* When the window without the option, "Get IP Address Automatically" is displayed, please enter the IP address (mandatory), subnet mask and default gateway.

**9** Check the settings and click **Execute**.



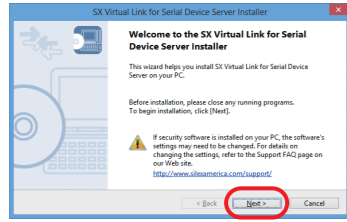
**10** Select **Yes** and click **Finish**.



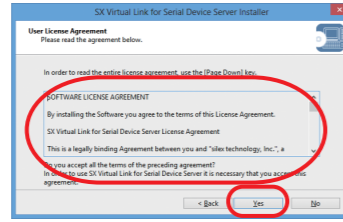
\* If you do not want to install SX Virtual Link for Serial Device Server, select **No** and go on to **20**.

The following explains how to install SX Virtual Link for Serial Device Server. Follow the instructions on the screen to install it.

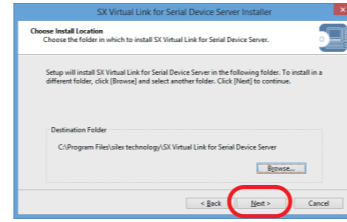
**11** SX Virtual Link for Serial Device Server Installer wizard is displayed. Click **Next**.



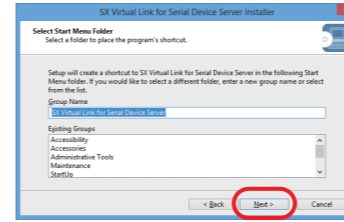
**12** Read the **SOFTWARE LICENSE AGREEMENT** and click **Yes**.



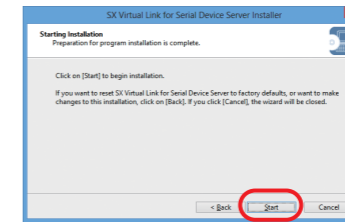
**13** Select the folder to install into and click **Next**.



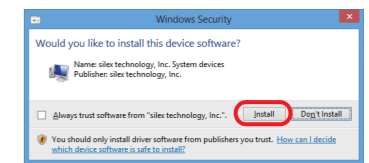
**14** Enter the Group Name to be displayed in the Start Menu. Click **Next**.



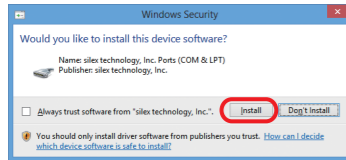
**15** Click **Start** to begin the installation.



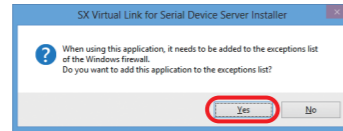
**16** Windows Security message is displayed. Click **Install**.



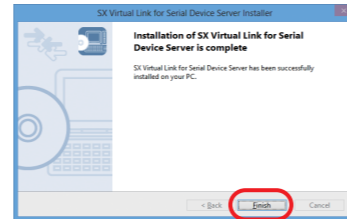
**17** Click **Install**.



**18** When the message below is displayed, click **Yes**.

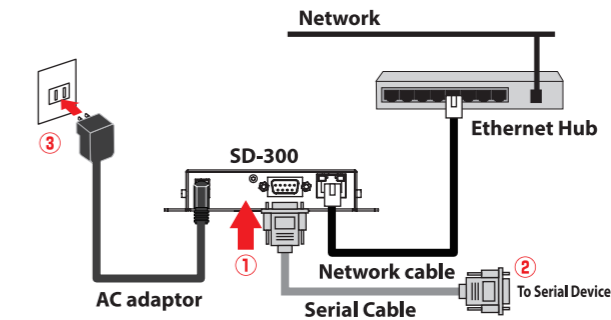


**19** The completion screen is displayed. Click **Finish**.



**20** Unplug the AC adapter from the outlet for these settings to take effect.

**21** Connect the serial device that you wish to share over the network to SD-300 using a serial cable and insert the power plug of SD-300 into the outlet.



## Step3 Link to Serial Device

In this Setup Guide, how to link the serial device using SX Virtual Link for Serial Device is described (this method is called as "Serial Port Emulation Mode"). For other communication methods, see the SD-300 User's Manual that you have downloaded at **Step1 Before You Begin**.

### Install the necessary application to a PC


Install the SX Virtual Link for Serial Device if it is not yet installed to the PC where you use SD-300. For how to download it, see **Step1 Before You Begin**. For how to install it, see **SX Virtual Link for Serial Device Server Installation** guide that you have downloaded.

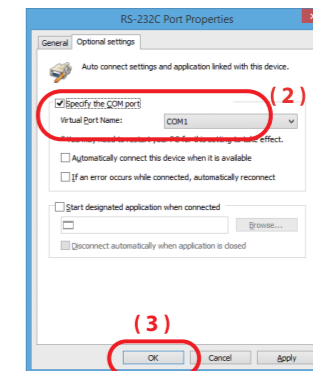
### 3-1. Start SX Virtual Link for Serial Device Server

Click the icon  in the task tray or click **Start - All Programs - SX Virtual Link for Serial Device Server - SX Virtual Link for Serial Device Server**.

### 3-2. Link to a serial device

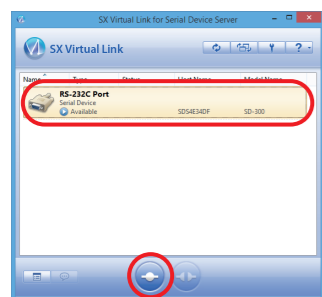
\* To specify the COM port manually, please complete the following steps before you link to the serial device.

- (1) Select the serial device that you wish to link and click the **Properties** button .
- (2) In the **Optional settings** tab, check **Specify the COM port** check box and select the COM port that you wish to use from **Virtual Port Name**. (Please do not select one that is already used on your system.)



(3) Click **OK**.

**1** Select SD-300 in SX Virtual Link for Serial Device Server's main window and click **Connect** button .



**2** Once you successfully link to the serial device, the status icon is changed to "Connected" in the SX Virtual Link for Serial Device Server's main window. The COM port that you have selected is displayed in the status column.

### 3-3. Start a serial communication software

- 1** Start a serial communication software such as a terminal software, etc.
- 2** On the serial communication software, select the COM port that is displayed in the status column of the SX Virtual Link for Serial Device Server's main window.

\* Also, configure the serial port settings such as a baud rate, stop bit, etc. on serial communication software.

Once the communication settings are complete, you can communicate with the serial device connected to SD-300.

### 3-4. Unlink from a serial device

- 1** Close the serial communication software.
- 2** Select SD-300 in the SX Virtual Link for Serial Device Server's main window and click **Disconnect** button .

## Customer Support

**USA : silex technology america, Inc.**  
E-mail : support@silexamerica.com  
URL : https://www.silextechnology.com/