

High-performance Wi-Fi HaLow™ access point

AP-150AH-US



Extend your wireless network coverage and stay connected.

Product Overview

The AP-150AH-US is the high-performance Wi-Fi HaLow™ access point suitable to create the large-scale and long-range wireless infrastructure or replace the long cable with the long-distance wireless link. Its high bit rate up to 32.5Mbps over 10 times longer distance than 2.4GHz/5GHz/6GHz Wi-Fi unlocks use cases what have not been feasible by traditional wireless communication technologies. It features low-power operation enables convenient installation by allowing to power it up from another device's USB. It also features 12V/24V DC power supply to use power source from industrial equipment.

Benefits

Data transfer over a further distance

The AP-150AH-US offers long-range wireless coverage by utilizing the IEEE 802.11ah Wi-Fi HaLow™ technology. The product is enabled by the SX-SDMAH-US, which is certified by FCC with the leading-edge transmission power.

High data throughput

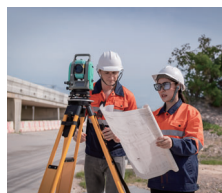
The AP-150AH-US offers up to 32.5Mbps bit rate to enable multiple 1080p encoded video streaming as well as the large data transfer for shorter time. Operating in the higher bit rate also improves the network efficiency of the large-scale device network as each data consumes less airtime, which can also result in lower power consumption in the connected devices.

Easy Installation

The AP-150AH-US features USB Type-C as the 5V power source or 12V/24V DC connector to provide flexibility in the power supply. As its Wi-Fi, the integration into existing IP network infrastructure is seamless.

Use Cases

- Wi-Fi HaLow™ infrastructure
 - Surveillance
 - Access control
 - Asset management
 - Building automation
 - Factory automation
- Long-range data transfer from imaging devices to a computer or network.
 - 3D scanner
 - X-ray DR system
 - Wild-life monitoring
 - Tablet camera data for facility management
- And many others



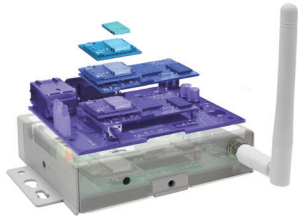
Key Features

- Compliant with IEEE 802.11ah
- 1/2/4/8MHz channel bandwidth support
- Up to 32.5Mbps PHY bit rate
- +24dBm transmission power
- 10BASE-T/100BASE-TX Ethernet interface
- Open/Enhanced Open/WPA3 security
- 5V power supply from USB Type-C
- 12/24V power supply from DC connector
- Remote device management by AMC manager or embedded web server

Customization Services

Embedded PCBA

Box, custom box, white-labelled product



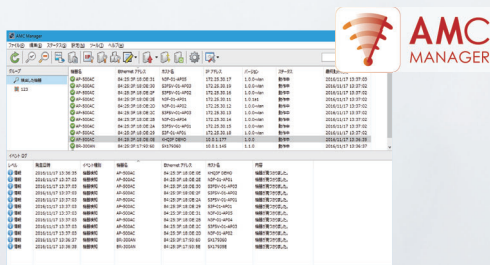
Silex offers a variety of wireless product customization services, from private labeling to rebranding. We can add or change specific features or port our technology to different platforms to suit your application needs. Bring your idea to life and build a high-quality wireless product, leveraging Silex's industry expertise and hardware and software engineering services.

Software

The AP-150AH access point is compatible with the optional device management software, AMC Manager®. With this software, network administrators can remotely manage Silex's networking products.

Remote Device Management Software AMC Manager®

AMC Manager® is an integrated management software that enables remote monitoring and batch configuration of Silex products via IP network. The software can manage up to 10,000 Silex products on the same network, allowing IT administrators to monitor network devices from their own seats.



Product Specifications

Model number	AP-150AH-US
Wired LAN interface	RJ-45 x 1 10BASE-T/100BASE-TX (auto negotiation)
Wireless LAN interface	IEEE 802.11ah (1x1)
Wi-Fi modules	SX-SDMAH-US
Operating frequency	BW1MHz: 903.5MHz – 926.5MHz BW2MHz: 905MHz – 925MHz BW4MHz: 910MHz – 922MHz BW8MHz: 908MHz/916MHz
Security	Open Enhanced Open WPA3-Personal Encryption: AES
Data Rate	MCS10 (BW 1MHz only) MCS1 – MCS7 (all channel BWs)
Operating condition	Temperature: -20°C to 40°C Humidity: 20% - 90% w/o condensation
Storage condition	Temperature: -20°C to 60°C Humidity: 20% - 90% w/o condensation
Power supply	5V +/- 5% (USB Type-C) 12V/24V +/- 5% (DC)
Maximum power consumption	4.75W at 5V or 6.0W at 12V/24V
External dimensions	100mm x 100mm x 25.5mm (excluding antenna)
Weight	145g (including antenna)
Standards	FCC Part15 Subpart B Class B ICES-003 Class B RoHS
Contents	Body, Antenna, LAN cable (AC adapter and USB Type-C cable are not included.)
Optional accessory	Wall-mount kit: Bracket V1
Warranty period	5 years

Any questions about the product?
Contact our customer support team!

<https://www.silextechnology.com/support/contact-silex-support>

silex technology is a registered trademark of silex technology, Inc. Other product or brand names may be registered trademarks or trademarks of their respective owners. Technical information and specifications are subject to change without notice. © 2024 silex technology, Inc. All rights reserved.

silex global sales & support locations



US Office
silex technology america, Inc.
+1-657-218-5199
www.silextechnology.com
sales@silexamerica.com

Europe Office
silex technology europe, GmbH
+49-2154-88967-0
Germany toll free 0800-7453938
www.silextechnology.com
sales@silexeurope.com

China
silex technology beijing, Inc.
+86-10-8497-1430
www.silex.com.cn
contact@silex.com.cn

Corporate Headquarters
silex technology, Inc.
+81-774-98-3781
www.silex.jp
support@silex.jp

